



SALOMON CONTEMPORARY
PRESENTS

LAKE LIFE

29 October through 6 November 2016

**The Garage at The Judy Black Memorial Park and Gardens
One Green Hill, Washington Depot, CT**

**Please contact James Salomon for availability
917.617.0828 • james@salomoncontemporary.com**

ANETA BARTOS

“Zalew”, 2015
C-Print, 20” by 20”
Edition of 5+2AP

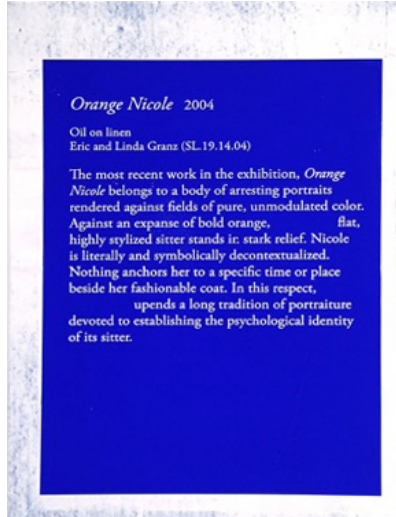


BRIAN BLOCK

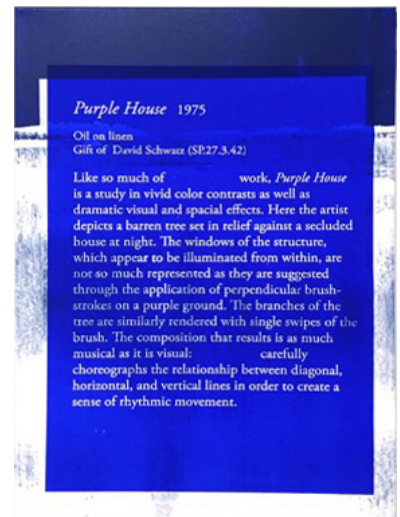
"Naomi", 2016
28" by 21"
acrylic and ink on canvas



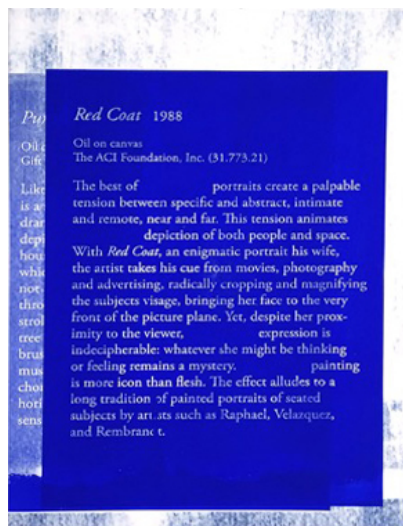
"Fields of Pure", 2016
28" by 21"
acrylic and ink on canvas



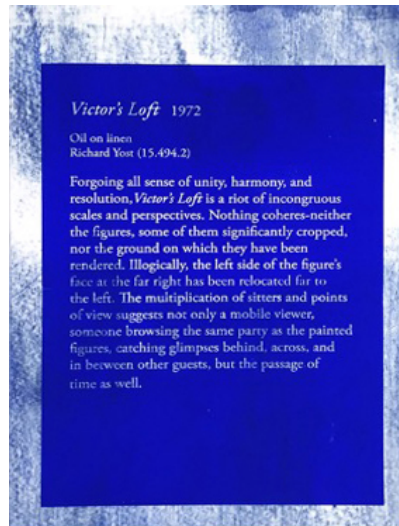
"And Special Effects", 2016
28" by 21"
acrylic and ink on canvas



"Specific and Abstract", 2016
28" by 21"
acrylic and ink on canvas

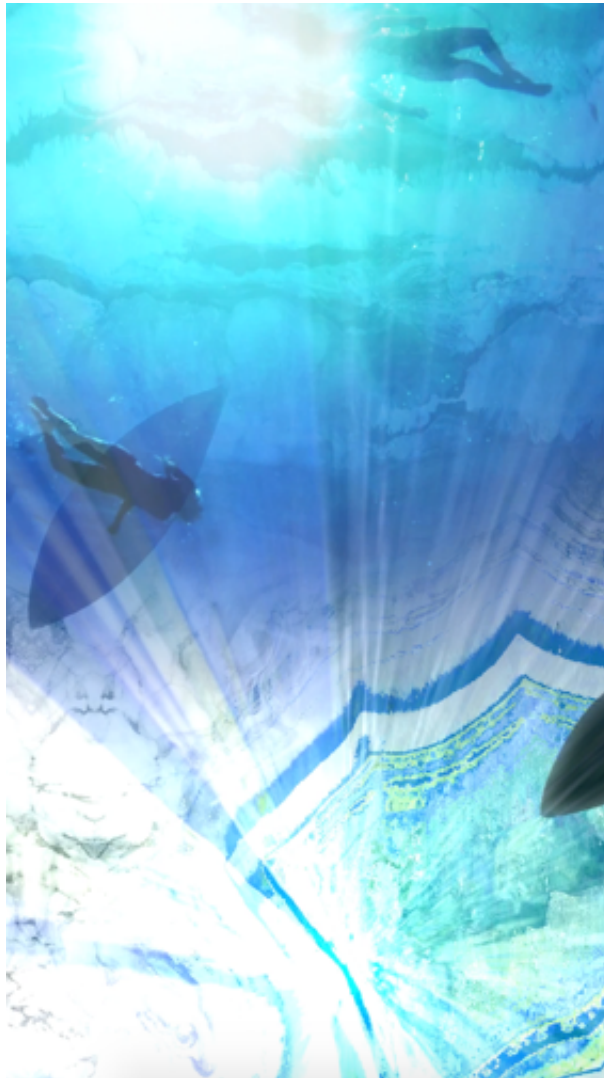


"Unity, Harmony", 2016
28" by 21"
acrylic and ink on canvas



NICOLE COHEN

"Fresh Water", 2016
Video, 3:00 loop, sound
Edition of 8 + 2AP



ADRIEN DE BONTIN

"Casa Castor", 2010
Digital gelatin silver print, 13" by 17"
Edition 3/5



MICHAEL HALSBAND

Samy Duvall Windemere, Florida July 31, 1986
Dye sublimation on aluminum, printed 2015
30" by 40" AP (unique)

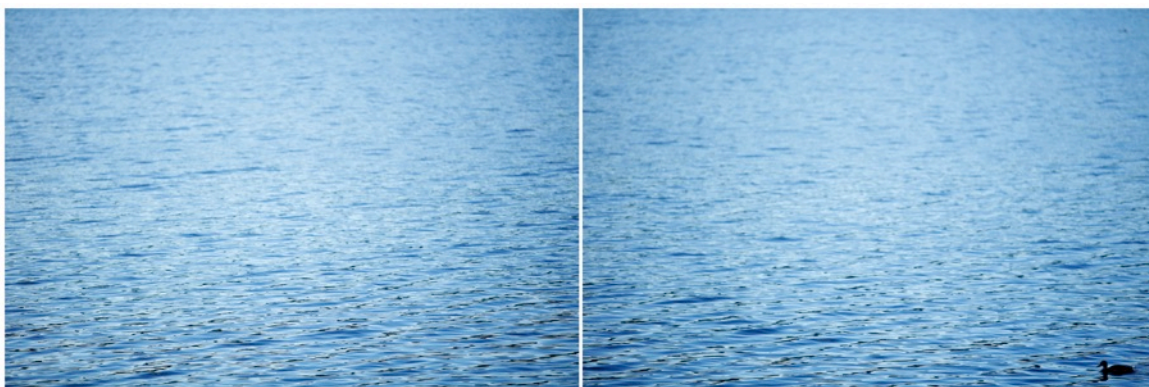


VISKO HATFIELD

"To Be Titled", 2016
C-print mounted on Plexiglas
40" by 40" Edition of 3



"To Be Titled" 2016
C-print mounted on Plexiglass
24" by 74" in two parts
Edition of 3



FITZHUGH KAROL

"Blue Bandit",
Douglas Fir, steel, paint
120" by 16" by 16"



"Loup", 2016
Charred Cedar
96" by 25" by 38"



PETER KIRKILES

"Aglia", 2016
Bronze, 6" by 26" by 12"



JILL MUSNICKI

from "The Next Generation"
Photograph mounted on aluminum
10" by 10" Edition of 30

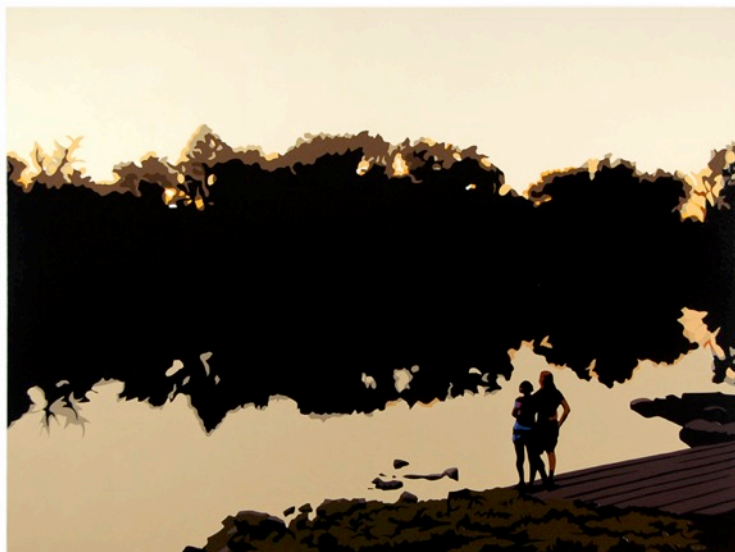


RICHARD PASQUARELLI

“House at Night XII, (Bantam, CT)”, 2016
Oil on linen, 48” by 36”



“Riverbend”, 2015
Oil on linen, 36” by 48”



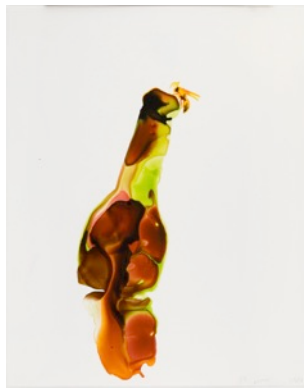
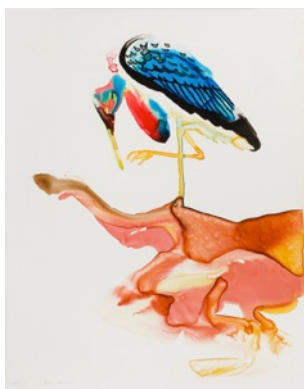
ASHLEY PRIDMORE

Swimmer, 2015
Bronze
6" x 5 1/2" by 1 1/2"



ALEXIS ROCKMAN

"Untitled", 2013
Watercolor on paper
14" by 10"



ADAM STENNETT

“Hand in Water” (Palm Up), 2016
Acrylic on paper, 22” by 30”



“Foot in Water”, 2016
Acrylic on paper, 22” by 30”



LAWRENCE WEINER

"SAIL ON", 2007
Watercolor on paper, 16" by 20"

